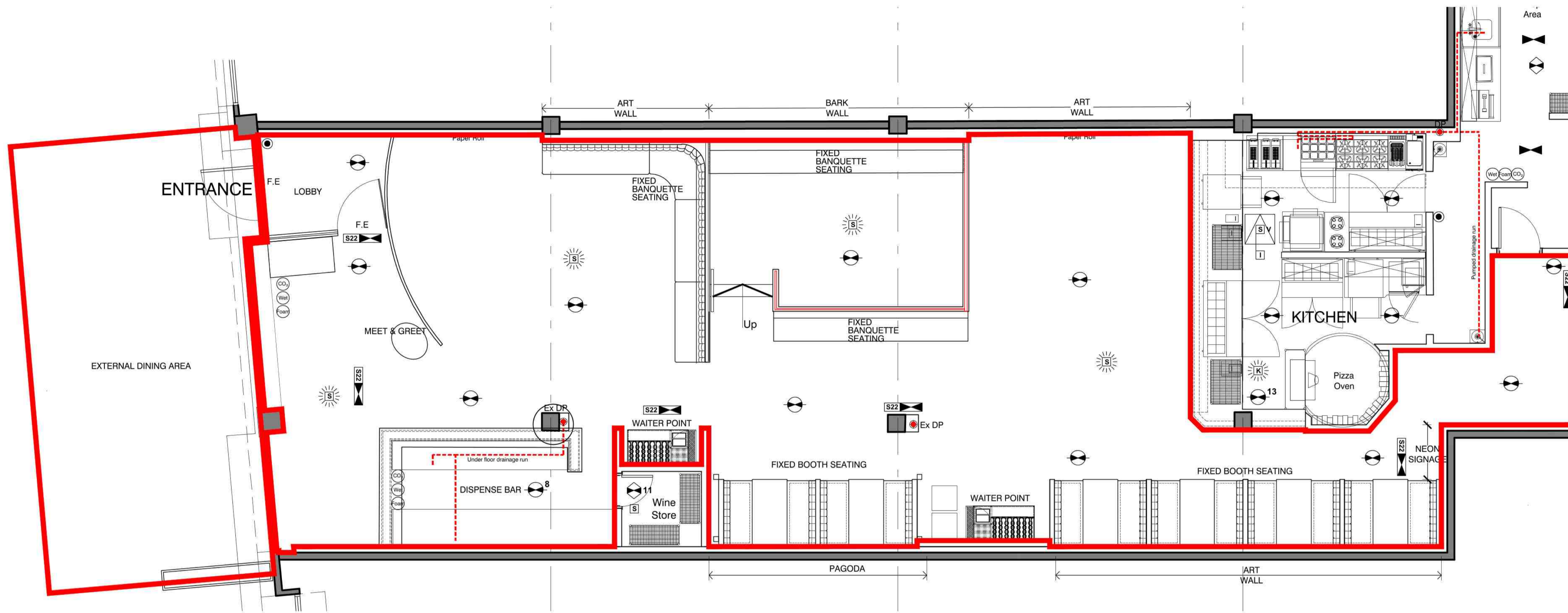


NOTE:
Contractor must verify all dimensions on site before commencing any work or shop drawings. If this drawing exceeds the quantities taken in any way the Architects are to be informed before the work is initiated. Only figured dimensions to be taken from this drawing. Do not scale off this drawing. Drawings based on Ordnance Survey and / or existing record drawings - design and drawing content subject to Site Survey, Structural Survey, Site Investigations, Planning and Statutory Requirements and Approvals. Authorised reproduction from Ordnance Survey Map with permission of the Controller of Her Majesty's Stationary Office.

Crown Copyright reserved. Fuse Studios Limited Copyright.



NOTES:

Reason For Issue:	By:	Date:	Revision:
INFORMATION	RXC	07-10-2021	R01

Zizzi

Reason For Issue: INFORMATION By: RXC Date: 07-10-2021 Revision: R01

LOCATION PLAN:

ZIZZI LANCASTER

Area: -

Drawing Title: LICENSING DRAWING

Drawing Number: 21035-ZLC-FSL-00-DR-04003

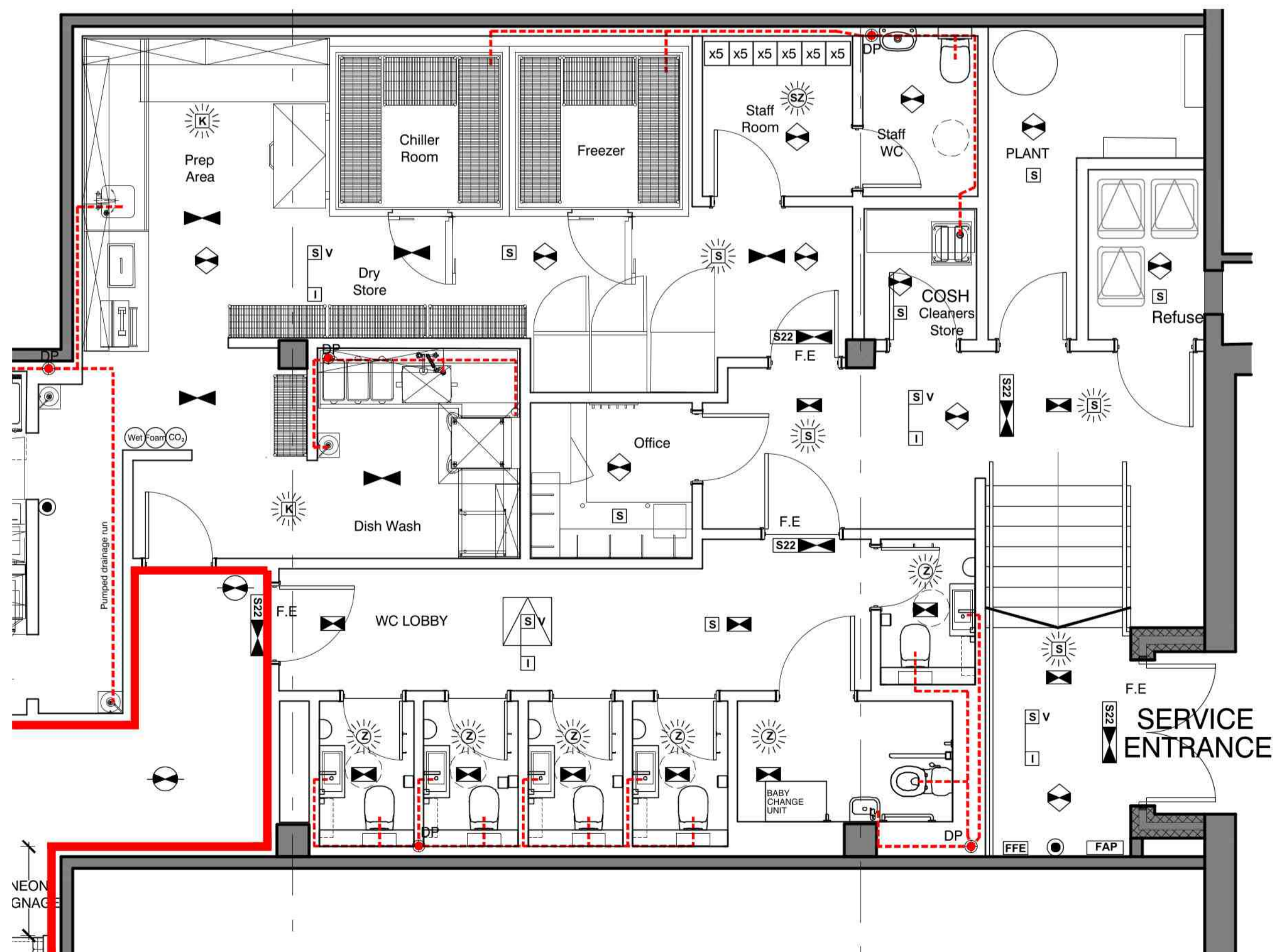
Revision: R01 Scale: 1:50 @ A1
Date: 07-10-2021

Drawn by: RXC
Checked by: SXR

West One
114 Wellington Street
Leeds LS1 1BA

Tel +44 (0) 113 880 0770
www.fuse-studios.com

INFORMATION **fuse.**



EMERGENCY LIGHTING SYSTEM
An independent self-contained non-maintained system, type XOA180, will be installed in accordance with BS 5266-1:2011, Emergency Lighting - Part 1 : Code of Practice for Emergency Lighting of premises other than cinemas and certain other specified premises for entertainment, and BS EN 50172 : 2004, BS 5266-8 : 2004 Lighting Applications - Emergency Lighting. Luminaires will be located in the approximate positions indicated on this drawing. All signs and notices will comply with BS 5499 : Part 1 - Fire Safety Notices and Graphic Symbols.

- Drawing Key:**
Key item above refers to : The area where licensable activities will take place
- Licensable Activities [Red Line]
- Fire and other Safety Equipment Key:**
Fire Extinguisher - Co₂ [Co₂ symbol]
Fire Extinguisher - Wet [Wet symbol]
Fire Extinguisher - Foam [Foam symbol]
- Key items above refers to : The Location and type of any fire safety and any other safety equipment is shown as at present. This may be varied from time to time with the agreement of the Fire Officer or after a fire risk assessment
- 0m 1m 2m 3m 4m 5m
Scale Bar for 1:50@A1
- S22 3 hr maintained exit legend FoH - Channel 'Razor' BoH - Channel 'Alpine'
 - [Symbol] 3 hr non-maintained Channel 'Meteor' Surface Bulkhead
 - [Symbol] 3 hr non-maintained Channel 'Safe Spot' 3W Recessed
 - [Symbol] 3 hr non-maintained Channel 'Glade' 1W Recessed
 - [Symbol] 3 hr non-maintained Channel 'SoHo' LED luminaire with PIR - E/SOHO/M3MW
 - X [Symbol] 3 hr maintained external Channel 'Brooke' Surface Bulkhead
 - [Symbol] 3 hr non-maintained flood Channel 'Grove'
 - FFE Fire fighting equipment

FIRE ALARM SYSTEM
A Fire Alarm system will be installed to BS 5839 : Part 1, 2013 Code of Practice for system design, installation, commissioning and maintenance, comprising of devices as indicated, in non-domestic premises. The system category is to be an L2 system.

- FAP Fire Alarm Panel
- MH Magnetic Door Hold
- Manual Call Point
- K Heat Detector
- S Smoke Detector
- I Indicator For Void detector
- v Indicates Void Detector
- Z Combined Smoke Detector & Zenon Beacon
- Z Zenon Beacon
- ☀ Sounder/Sounder Base

04 LICENSING PLAN
Scale - 1:50 @ A1